



DMLS FDM MJF SLA SLS MJP  
**3D Printing**

HLH, we make things for you

[HLHPrototypes.com](http://HLHPrototypes.com)

**HLH** | PROTOTYPES  
PROTOTOOL  
PRODUCTION

**Contact Us**

China Office: 1801 Xing Ji Building, Xin Sha Road Shajing,  
Baoan, Shenzhen, China, 518125

China Factory: Building A, Hongfa Industrial District Houda  
Road, Daling Shan, Dongguan, Guangdong, China

China Tel: +86-755-8256-9129 ext 817 for English  
[FreeQuote@HLHPrototypes.com](mailto:FreeQuote@HLHPrototypes.com)



## SLA Materials

Material	Material Reference	Colors
Generic Resin	CV-UV 9400	White
Rigid Resin	SOMOS 8000	White(Transparent)
High toughness	Godart®8228	Light Green
Transparent	Crysta-8QEF1	Transparent
High Temp	YG H-3001	Grey

### Maximum Size

880\*880\*400mm

### Surface Finish

Smooth. Paint.  
Dye. Chrome.  
Plate







## SLS Materials

Material	Material Reference	Colors
PA	FS3300PA	White
PA+GF	FS3400GF	Grey

### Maximum Size

340\*340\*420mm

### Surface Finish

Smooth. Paint.  
Sand blast.  
Dye.



# 3D PRINTING SERVICES - DMLS



## DMLS Materials

Material	Material Reference	Colors
Metal	Stainless steel 316L	Metallic color
	Titanium alloy	
	Aluminum alloy	
	Die steel	
	Nickel base superalloy (GH4169)	

### Maximum Size

425\*425\*420mm

### Surface Finish

Smooth.  
Sand blast





# 3D PRINTING SERVICES - FDM



## FDM Materials

Material	Material Reference	Colors
PA	PLA	Many colors

## Maximum Size

406\*355\*406mm





## MJF Materials

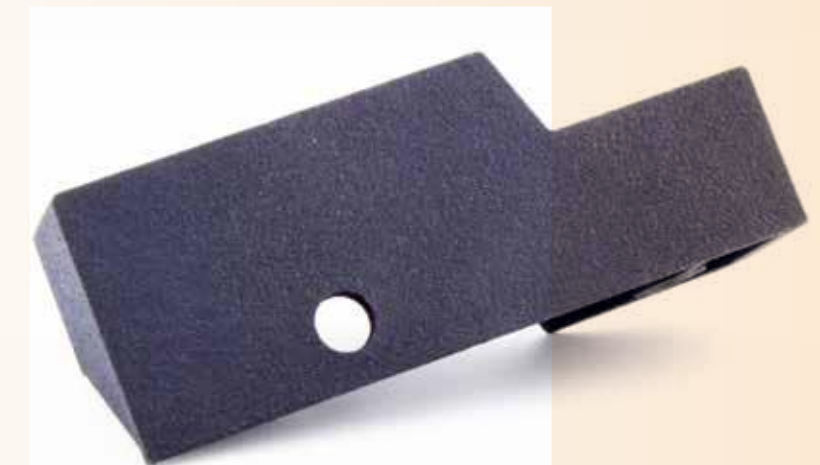
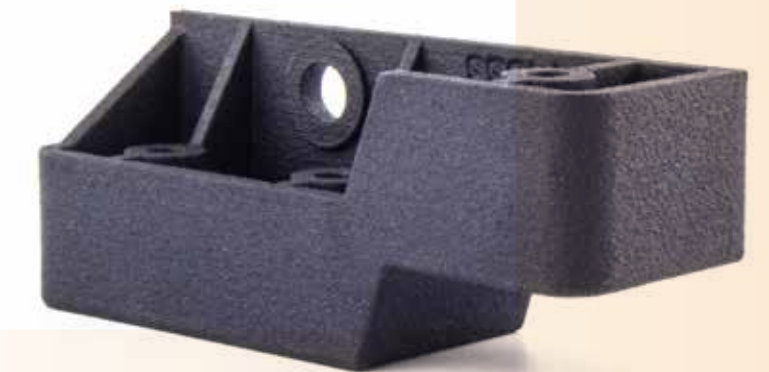
Material	Material Reference	Colors
PA	PA12	Black

## Maximum Size

380\*284\*380mm

## Surface Finish

Smooth. Paint. Sand Blast







## MJP Materials

Material Reference	Colors
M2G-CL	Transparent

## Maximum Size

294\*211\*144mm

## Surface Finish

Painting. Silk Screen. Etc



Picture: HLH PROTOTYPES



Picture: 3D Systems



Picture: 3D Systems



Picture: 3D Systems